

Live the way you are – naturally individual:
Aluminum-clad wood facade system from UNILUX



FINELINE – THE INTERIOR/EXTERIOR FACADE



WHERE QUALITY IS AT HOME

Live the way you are – naturally individual:

FineLine – Aluminum-clad wood facade system from UNILUX



Image reference: 5

Contents

UNILUX: Where quality is at home	4-5
All good things come in sixes: Brand advantages of UNILUX	6-7
Advantages of mixed materials	8-9
UNILUX FineLine	10-11
UNILUX HS Integral	12-13
UNILUX Insert units	14-15
Quality at the first glance	16-17
UNILUX basic advantages and UNILUX optional advantages	18-19
Freedom of design in terms of material and color	20-21
Inside and outside: Profiles for FineLine	22-23
FineLine is variety	24-25
The reliability of a big name	26-27

Live the way you are – naturally individual:

FineLine – Aluminum-clad wood facade system from UNILUX



UNILUX

One brand.
One promise.

Just enjoy the view. Let your eye wander.

Without limits. Large facade formats permit an entirely new experience of your surroundings. Get the greatest possible transparency in your house – with large-area glazing in the UNILUX FineLine facade, the UNILUX HS Integral lift-and-slide door, or the UNILUX aluminum-clad wood large-format JumboLine door.

In line with our overall concept, the UNILUX products are in-house developments that show off high product intelligence and complex engineering art.

As one of the leading manufacturers in the aluminum-clad wood segment, UNILUX has an efficient production process that makes it possible to offer these unique aluminum-clad wooden products at a price where top quality is affordable.

Where quality is at home – UNILUX



All good things come in sixes:

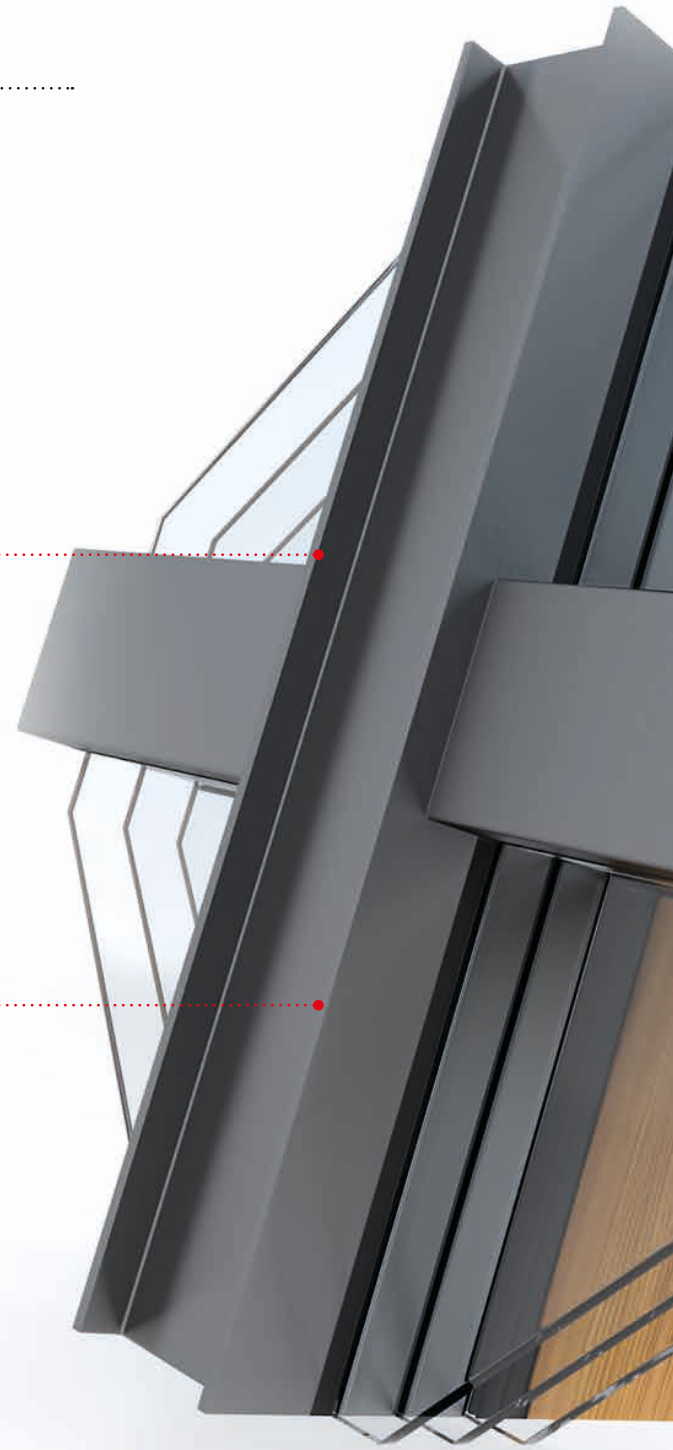
The UNILUX brand advantages

Brand advantage 1: Durability

Since we were founded, UNILUX has always used the highest-quality materials. All aluminum profiles are manufactured according to the strictest of requirements. Our plywood, in nearly knot-free quality, will satisfy even the most demanding of customers. All seals, inside and out, are made of resilient artificial rubber. The accurate processing and strict quality control guarantee that you will enjoy your glass facade for years.

Brand advantage 2: Freedom of design

Cut to fit right from the factory. High-quality and lots of variants. A clear language of shape lends the UNILUX FineLine facade its unmistakable appearance. And you set the accents. Thanks to the variety of different cover profiles on the outside, you can implement your own personal design. That's just as true of the interior wooden profiles, which we produce in 5 refined wood varieties to profile your taste exactly. With 187 wood color tones and 2,132 colors of aluminum, you can create your own color combinations in a flash. Good to know: All UNILUX aluminum-clad windows and Meisterfenster and JumboLine doors can be combined with the FineLine structure. You can also create individual solutions with the FineLine facade system which can be constructed according to predefined criteria with project planners or building planners.



Brand advantage 3: Energy balance

The combination of high structural insulating aluminum top unit design and a warm wooden plank profile isn't just a guarantee of long-lasting quality, but also ensures great energy savings. In combination with high-quality triple-glazed insulating glass, U-values into the passive house range can be achieved. Glass panes with 24 to 54 mm total thickness can be built into the structure. That keeps the heat where it belongs: in the house.

Brand advantage 4: Security

The FineLine facade system doesn't just keep out rain and weather, but with appropriate glazing (resistance class RC 2) even uninvited guests – the basis for burglary-proof structures. The UNILUX FineLine system meets the requirements of applicable European directives is therefore allowed to carry the CE mark. Because product safety has been top priority at UNILUX since our founding.

Brand advantage 5: Service

UNILUX works exclusively with our own qualified retailers. You can find them anywhere in Germany, right on site with their own local showrooms. Your regional UNILUX retailer will offer you detailed advice and assist you with your plans. They will also ensure prompt, correct installation, and will be available at any time if you have any service-related needs.

Brand advantage 6: Brand quality

Since 1955, UNILUX's philosophy has been: Only products of uncompromising quality leave the factory. This made our company a recognized quality leader for the decades. Anyone who pays heed to the UNILUX logo can be certain of always receiving a "Made in Germany"-branded product.

Live the way you are – naturally individual:

FineLine – Aluminum-clad wood facade system from UNILUX



ADVANTAGES OF MIXED MATERIALS

Aluminum outside,
inside pure wood –
melded for generations

The best of both worlds. The UNILUX FineLine facade stays in shape for the long term. On the outside, the aluminum top unit design guarantees high weather resistance, thermal insulation and retention of value. Indoors, the supporting high-quality curtain wall system will convince you with its aesthetics and warmth.

The mixed materials of wood and aluminum ensures a long life due to precisely tuned components: slim, stable, transparent, flexible and safe.

FineLine facades from Unilux: THE ORIGINAL.



Live the way you are – naturally individual:
FineLine – Aluminum-clad wood facade system from UNILUX

Facade system

UNILUX FineLine

More light, more sight! With UNILUX you can finally feel yourself at home in nature. The large-format glazing of the FineLine facade ensures a limitless view.

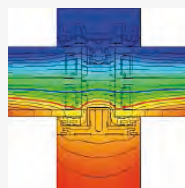
The design, reduced to the minimum with its clear, slim form, lends the UNILUX FineLine facade an unmistakable appearance. Thanks to numerous combination options – from the wood variety to the aluminum color – you can set remarkable accents.

Even in terms of energy efficiency and security, the FineLine facades and the Integral lift-and-slide doors from UNILUX are perfect additions to your home. And with maximum design freedom, too – when it comes to custom property solutions, you'll benefit from our wide range of experience.

Ask your UNILUX facade consultant about the options.



UW VALUE
< 0.8
W/m²K



Thermal insulation without compromises. Every UNILUX facade is energetically equipped for the coming years and decades. The massive frame effectively stops cold outdoor air – lowering the need for heat. Ask your UNILUX partner about the options for significantly reducing energy consumption.





Image reference: 5



Image reference: 6



Image reference: 7

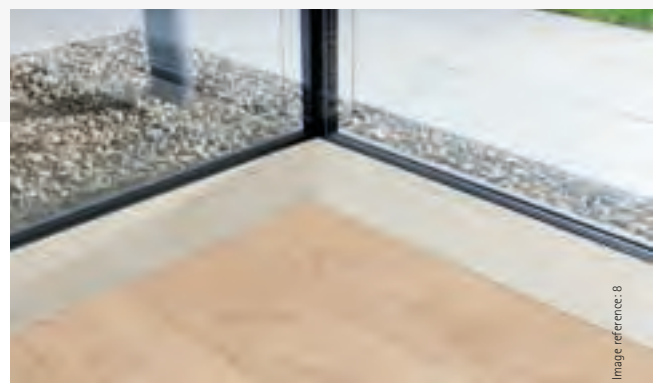


Image reference: 8

Elegant construction

Massive beams are good in your roof – but not in your facade. That's why UNILUX uses slim wooden structures that let you catch the daylight to the fullest possible extent.

Multi-level facade

We orient ourselves to the sky, not the ceiling of the room. So the UNILUX Fineline facade can span multiple stories if you like – for a monumental exterior appearance.

Ground-level installation

Nothing sticks out and nothing overlaps. The Fineline facade is flush with the ground. And that's another thing the UNILUX name stands for: Millimeter accuracy that is functionally and visually convincing.

Live the way you are – naturally individual:

FineLine – Aluminum-clad wood facade system from UNILUX

Facade sliding door

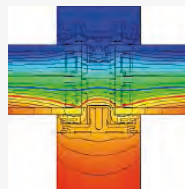
HS Integral

The official expression is sliding door. But the HS Integral is more of a gliding door. The classical comfort sashes move smoothly and open the indoors outwards. Relaxation that comes with a unique room effect.

Ask your UNILUX facade consultant how you can best make use of the HS Integral from an architectural standpoint.



UW VALUE
< 0.8
W/m²K



Every UNILUX facade is energetically equipped for the coming years and decades. The massive frame effectively stops cold outdoor air – lowering the need for heat. Ask your UNILUX partner about the options for significantly reducing energy consumption.



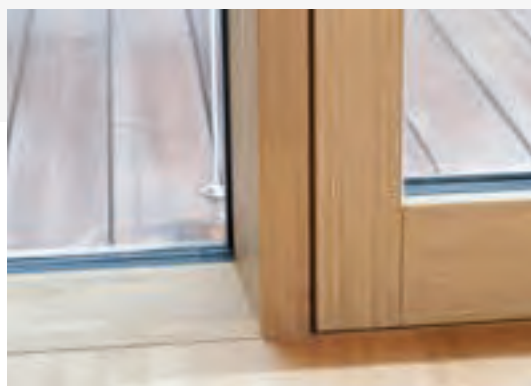


Image reference: 8



Integration of floor coverings

A careful look will pay off. The terrace floor can be continued right up to the door element. That eliminates the irritating intermediate part between the room and terrace floors. Everything from a single mold.



Unique room feeling

You'll notice the fact that you won't notice it. The only components are integrated directly into the architecture itself. This expands the room visually and creates a harmonious effect.



No threshold

No stumbling, no stopping. Thanks to a uniformly even surface, the "threshold" is a thing of the past. Inside and outdoors join seamlessly. Freedom from barriers that's also visually attractive.

Live the way you are – naturally individual:

FineLine – Aluminum-clad wood facade system from UNILUX

Insert units

JumboLine and UNILUX windows

What doors and windows harmonize with the FineLine facade? There are good answers to that question, too. In the JumboLine balcony doors and glass entry doors as well as the comprehensive range of UNILUX aluminum-clad wood windows (alternatively, wooden Meisterfenster windows) you'll find tailor-made complements to your facade system. Because all our aluminum-clad wood window and door elements harmonize perfectly with the aluminum-clad wooden facade system.

They don't just meld perfectly into the FineLine structure from a visual standpoint, but are also designed to the specific requirements of glass facades. With the JumboLine doors, for example, –you can achieve heights of up to 3 meters – for everybody that wants to go big.

Ask your UNILUX facade consultant about the options.





High-load JumboLine doors

Thanks to the massive PowerHinge system, a JumboLine door can carry up to 300 kilograms. The invisible turn limiter also stops automatically at an opening of 90 degrees – that protects the door hinges.



Glass entry doors

An entry doors can be aluminum-clad wood, plastic, or aluminum. For anybody who wants to drive a consistent line in terms of design, we also offer glass entry doors that fit perfectly into your facade concept.



Window

UNILUX has made a name for itself in aluminum-clad wood windows. Many customers want that oversized quality – and the Fineline facade is the logical solution. No wonder the two fit so well together.

Image reference: 3

Image reference: 3

Image reference: 6

Image reference: 9

Live the way you are – naturally individual:
FineLine – Aluminum-clad wood facade system from UNILUX



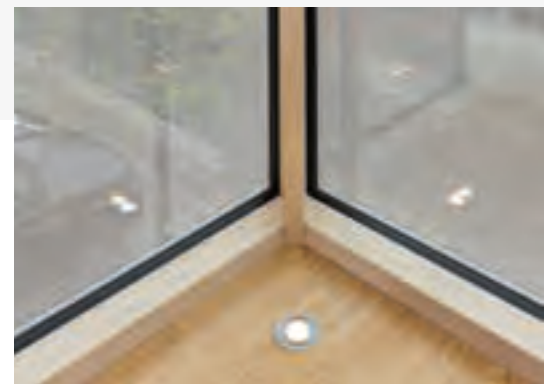
Image reference: 6



Image reference: 3



Image reference: 7





Quality at the first glance

- A uniform system – everything from a single source
- Efficient thermal isolation to passive house standards with a U_{cw} of $0.75 \text{ W/m}^2 \text{ K}$ for an element size of $1,350 \times 3,000 \text{ mm}$ and a U_{cw} of $0.83 \text{ W/m}^2 \text{ K}$ for an element size of $1,000 \times 2,600 \text{ mm}$
- Insulating cross bars for all double and triple glazing with a glass thickness between 24 and 54 mm
- Centering grooves in the wood profiles for easy mounting of the aluminum base profiles
- Field-by-field drainage using sealing end piece with integrated drainage and ventilation of the rebate space. This also ensures efficient mounting for small facades.
- High-quality glass carriers of FRP composite material to support high glazing loads with simultaneously outstanding thermal isolation
- Machining-friendly preconfiguration of the entire wood structure including all joint grinding and complete final surface treatment in UNILUX quality
- Demanding design options for the outdoor aluminum cover plates and the interior wooden profiles
- Polygonal facades
- UNILUX software module for the use of LogiKal planning software

Testing / approval / CE system audits according to DIN EN 13830, product standard for pre-hung facades

Resistance to wind:	+/- 2,400 Pa (nominal load)
Impact resistance:	Class indoor I5, outdoor E5
Air penetration class:	Class AE 1.200
Driving rain-tight:	Class RE 1.350
Fall protection according to TraV:	Yes, without additional measures
Burglary resistance class:	RC 2 with reduced fastener spacing in the pressure bar / glass bar

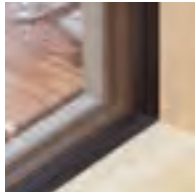


Quality as a standard: the basic UNILUX advantages

You know it from buying cars: Some models seem cost-effective at first glance. But upon closer examination, you are incredulous at all the extras charged by the manufacturer.

Not with UNILUX. Our basic features in themselves are so extensive, that there is often no need for accessories. Every one of our aluminum-clad wood FineLine facades has the following standard equipment features:

Glazing seal



UNILUX aluminum top unit designs rely exclusively on highly robust seals of synthetic rubber (EPDM). Every glass panel is separately ventilated and drained by our catch bolt part. This design is easy to install and has many

identical parts for cost-effective construction.

Design



If you're carrying the load, you need a strong cross bar. That's why UNILUX curtain wall systems use a steel fastener – for that added stability and resistance. Broadly glued wooden profiles also ensure high solidity and can be glued at depths of up to 350 mm to meet their static requirements. You can implement even

the most demanding of forms with technology like that.

Superior-quality wood



For the love of craftsmanship, UNILUX uses wide planks of top quality. As an FSC-certified company, we place our focus on wood taken from sustainably maintained forests. We meet these high standards even during the manufacturing process –

for a long, healthy wood life.

Energy efficiency



Thanks to thermally isolated top unit design, our thermal insulation ranges into passive house levels. The outdoor functional level of aluminum profiles is hermetically sealed from the inner design level made of wood.

The large glazing surfaces of the FineLine facade system also allow a great deal of solar intake

with appropriate glazing.

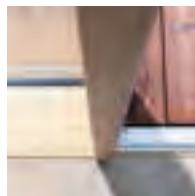
Aluminum powder coating



"The paint is peeling." That sentence will never be heard by UNILUX owners. We use an aluminum powder coating on our aluminum-clad wood windows that was originally developed for the automotive industry. The result is an extremely tough paint that unpleasant weather

just can't touch.

Aesthetics



The viewing width of the UNILUX FineLine facade profile is only 50 mm. This elegant design opens up architectural freedom (even between floors) – without losing any of the functionality.

In combination with the UNILUX Integral lift-and-slide door, large-area openings can be implemented with a sash weight of up to 400 kg.



Extra perfect: the UNILUX optional advantages

Special circumstances require special solutions. That's why when it comes to security, material safety, and thermal efficiency, UNILUX offers exclusive added value.

These additional benefits give you the certainty that your aluminum-clad wood window is top in its class. Perfection, made by UNILUX.

MHS 400



Even the door leaves have sashes. Using the electric MHS 400 drive, the HS Integral lift-and-slide door can open conveniently at the press of a button. Even elderly users, children, and the handicapped can move massive doors easily.

Climate-protection insulating profile



That keeps the heat inside the house: with the patented UNILUX Climate-Protect-insulating profile. It joins glass areas together with high insulation values – for the maximum possible energy efficiency. It doesn't matter whether you decide on glass thicknesses of 44 or 54 mm.

Plus: Aneloxal coating



Not just acid rain can break metal down. Salty sea air can also have aggressive effects up to 100 kilometers in from the shore – even on stainless steel.

A pre-anodization – the Aneloxal process – effectively prevents corrosion. We are one of the few manufacturers to use this type of coating upon request, ensuring that even near the coast your UNILUX aluminum-clad wood windows will be a synonym for long life.

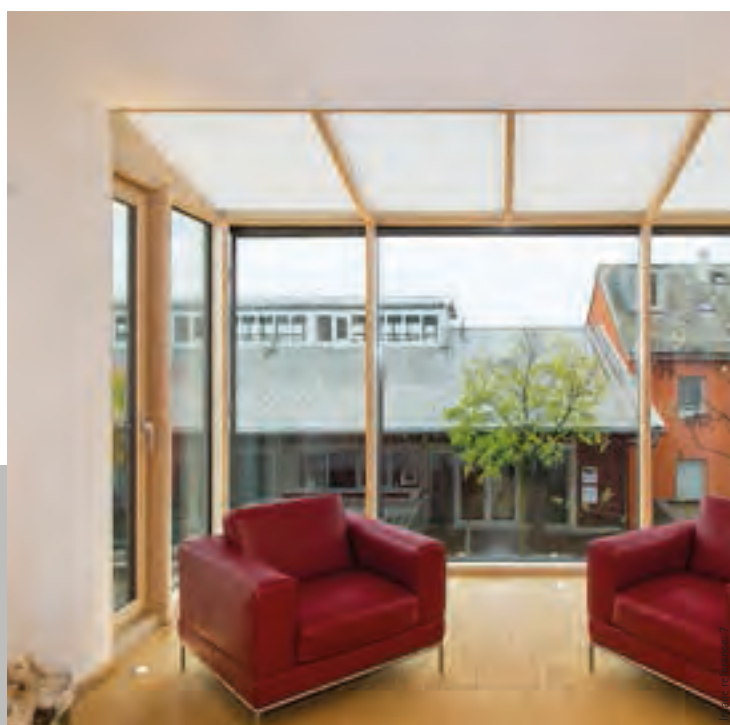


Image reference: 6

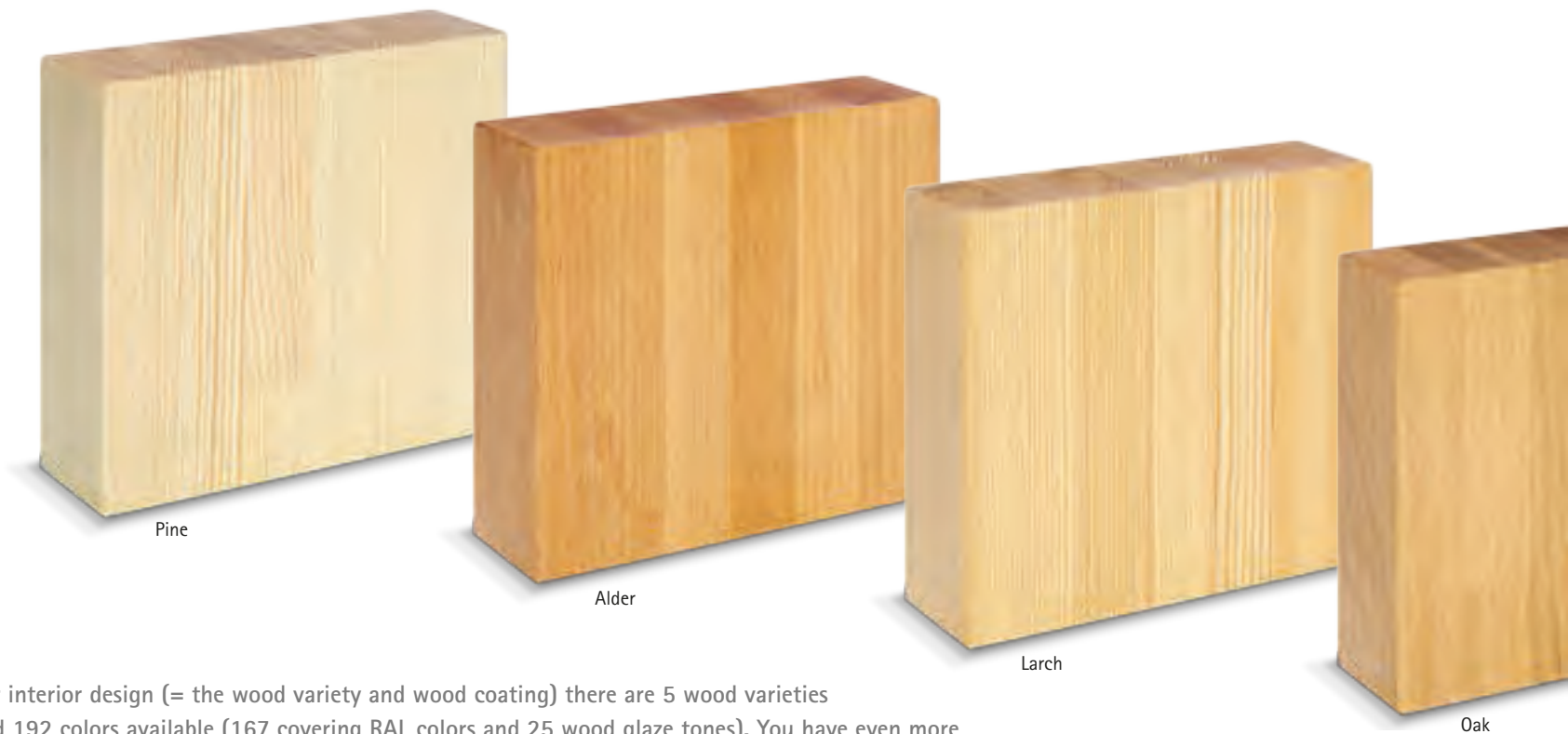
Image reference: 7

Live the way you are – naturally individual:

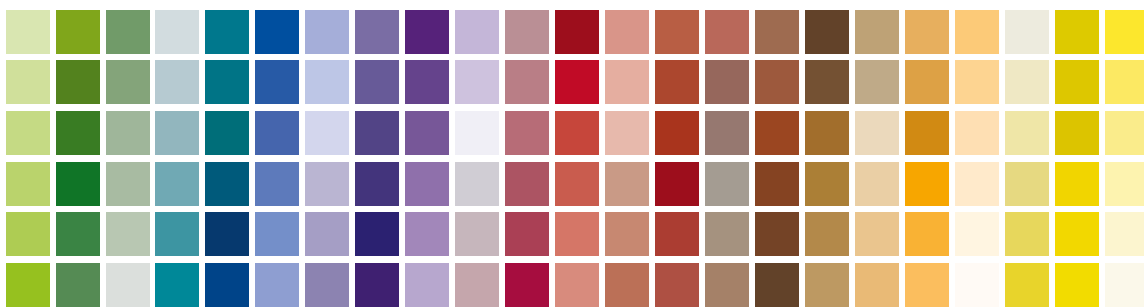
FineLine – Aluminum-clad wood facade system from UNILUX

Freedom of design in terms of material and color

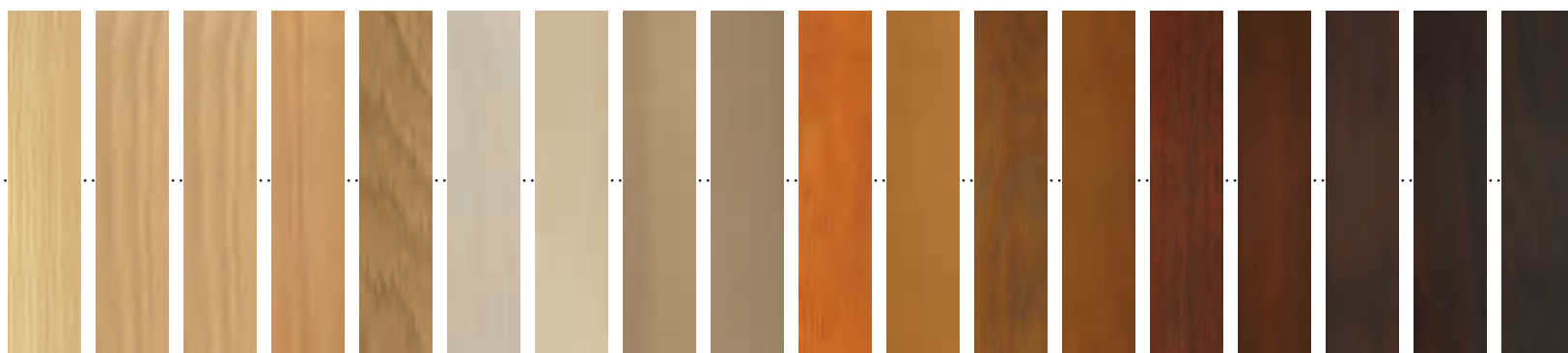
How many different tastes are there? When it comes to woods and colors, there are about 2 million. That's the number of combination options you have for your custom UNILUX aluminum-clad wood window. Find out which wood harmonizes best with which colors, and which decor is right for your aluminum cover.



For interior design (= the wood variety and wood coating) there are 5 wood varieties and 192 colors available (167 covering RAL colors and 25 wood glaze tones). You have even more options for the exterior design (= the aluminum covering). Here, you can choose from over 2,100 colors or decors (RAL, NCS, DB/Eloxal and white pigment colors as well as wood decors).



Color deviations from the printing process are possible.



Choose from the following wood species: Pine, alder, larch, oak, and exotic wood, along with 20 transparent or semitransparent wood glaze tones.



You love wood

Wood is a living material. It's nice to be able to integrate it into one's living space. UNILUX aluminum-clad wood windows bring that liveliness into your living room.



Your world is colorful

Colors are an expression of personality and attitude towards life. Show off your taste by choosing from a range of colors that leaves nothing to be desired.



It's your choice

When it comes to wood colors, too, UNILUX always gives you the choice. Select from a wide variety of wood species, and make the most of the options for designing the wood's color scheme.

Live the way you are – naturally individual:
FineLine – Aluminum-clad wood facade system from UNILUX





Inside and outside

Enhance your profile. Whether outdoors or indoors, aluminum or wood – even in terms of shape, UNILUX gives you choices. Your design can be brought to life, without ifs, ands, or buts.



Live the way you are – naturally individual:

FineLine – Aluminum-clad wood facade system from UNILUX



FineLine is variety

All theory is grey. Get a picture of the options the FineLine facade offers.

From the design of the aluminum cover to the wood profile and wood variety. And let's not forget: the practically limitless variety of colors.

Your UNILUX consultant will be happy to open up the FineLine case for you – there's a lot to discover.



Image reference: 7

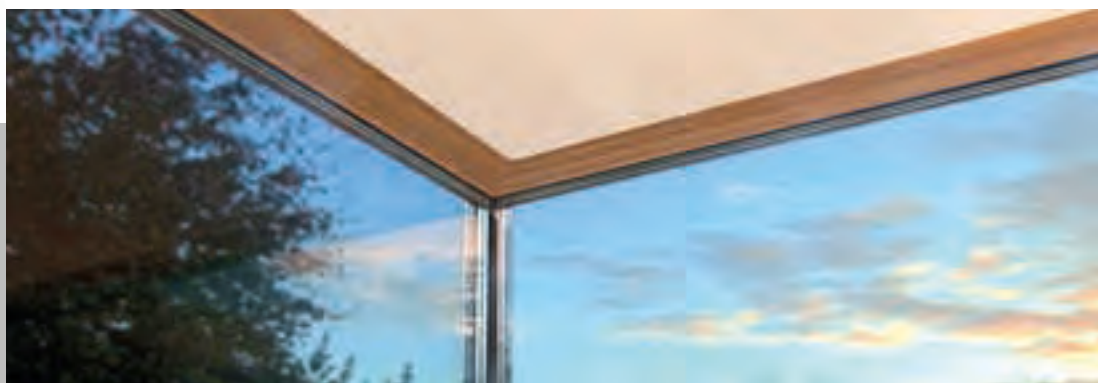
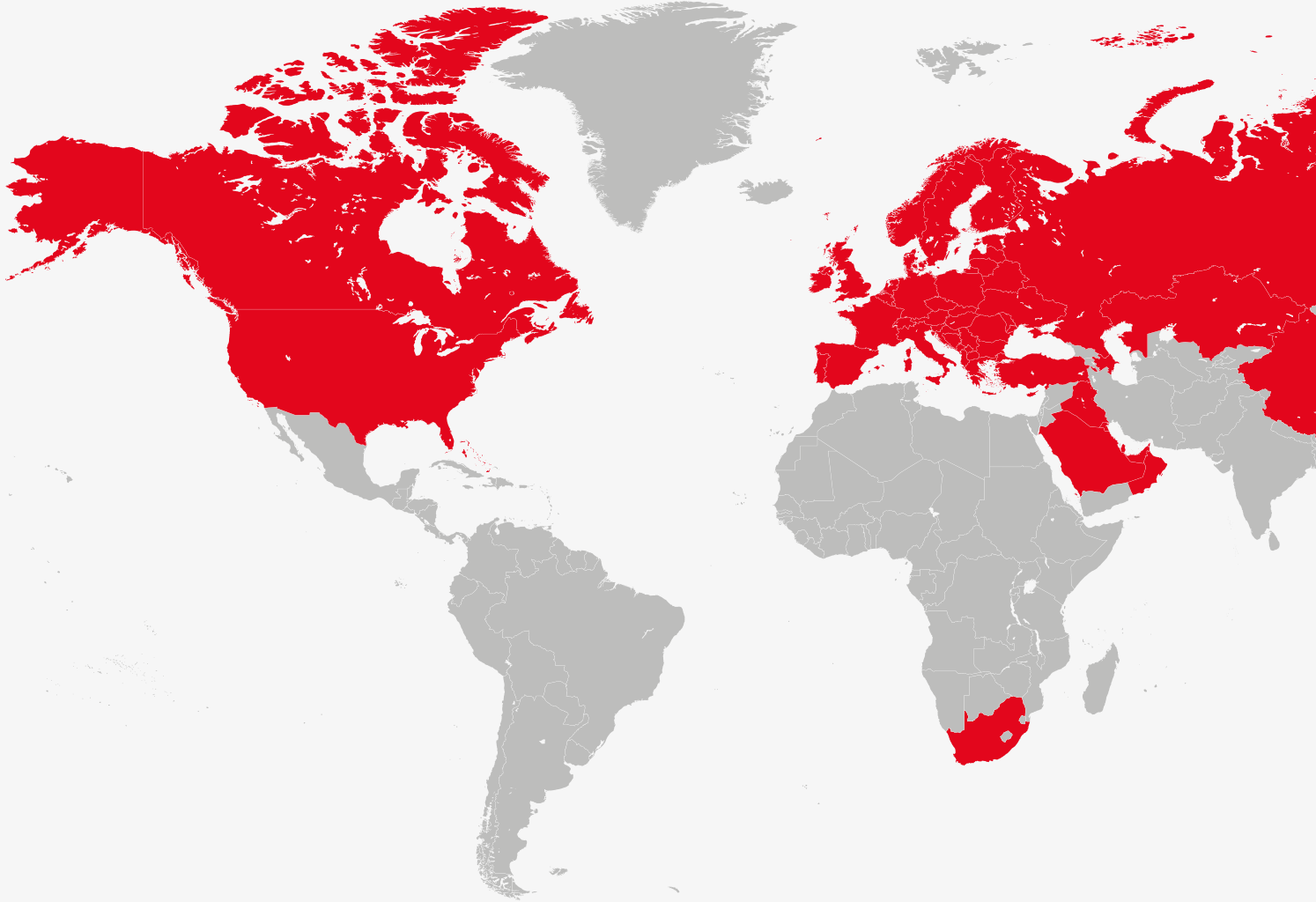


Image reference: 12

Live the way you are – naturally individual:

FineLine – Aluminum-clad wood facade system from UNILUX

The reliability of a big name



UNILUX ensures award-winning sustainable progress

- by selecting the right partners and raw-material suppliers, and by being a member of leading institutions and associations:



UNILUX products meet international testing and safety standards:





Company info

Publisher

UNILUX AG
54528 Salmthal / Germany
Phone +49(0)6578/189-0
Fax +49(0)6578/1880
e-mail info@unilux.de
www.unilux.de



Notes

The content of this catalog is not legally binding. The content of this catalogue is not legally binding and may be subject to technical changes as part of further developments or errors in the text, images or descriptions. The use of pictorial and textual material – even excerpts – is only permitted upon request and only with explicitly granted approval in writing.

The image material used is for illustrative purposes. Differences in color are unfortunately unavoidable due to printing. The sample illustrations are not to scale.

© 2014, UNILUX AG. All rights reserved.



UNILUX headquarters, Salmthal

Please contact us:
Phone 08 00 / 450 0 450

UNILUX AG
54528 Salmtal / Germany
Phone +49(0)6578/189-0
Fax +49(0)6578/1880
e-mail info@unilux.de

www.unilux.de



WHERE QUALITY IS AT HOME